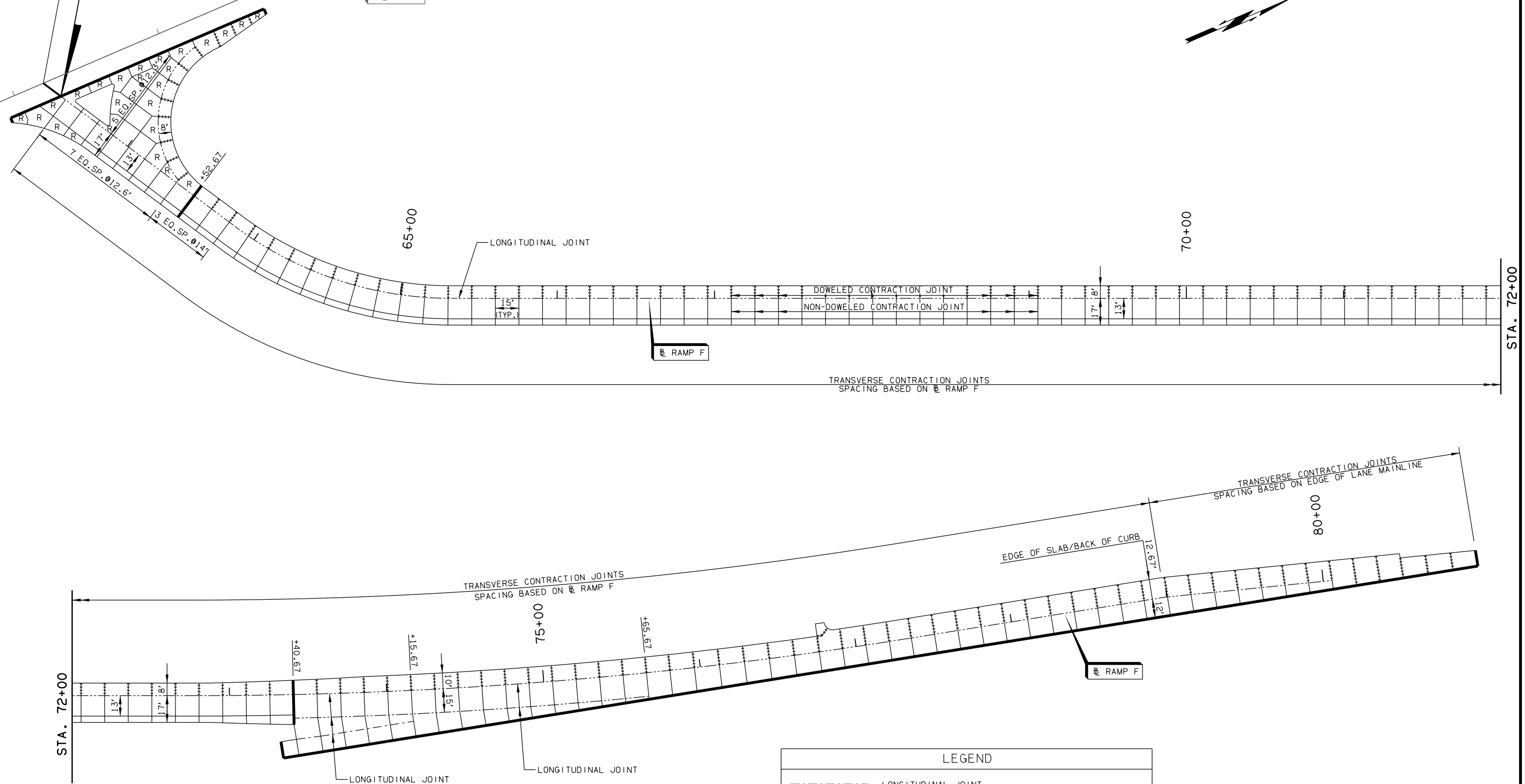
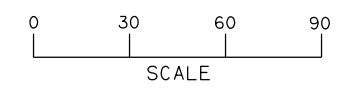


RAMP F STA. 62+33.07=
C025 STA. 69+50.00

STA. 62+46.98
BEGIN CONSTRUCTION RAMP F

Ⓞ C025

OKLAHOMA DEPARTMENT OF TRANSPORTATION					
FED. ROAD DIST. NO.	STATE	JOB PIECE NO.	FISCAL YEAR	SHEET NO.	TOTAL SHEETS
6	OKLA.	27050(04)	2017		
DESCRIPTION		REVISIONS		DATE	



- NOTES:
1. TRANSVERSE JOINT SPACING SHALL BE A MINIMUM OF TWO (2) FEET AND A MAXIMUM OF FIFTEEN (15) FEET.
 2. SLAB WIDTH SHALL BE A MINIMUM OF TWO (2) FEET.
 3. ANGLE BETWEEN INTERSECTING JOINTS SHALL BE A MINIMUM OF SIXTY (60) DEGREES, NINETY (90) DEGREES DESIRABLE.
 4. DEAD END JOINTS SHALL BE PERPENDICULAR TO PAVEMENT EDGE OR INTERSECTING JOINT.
 5. TRANSVERSE JOINTS LOCATED IN A RADIUS SHALL BE RADIAL LINES INTERSECTING THE CENTER POINT OF THE CURVE RADIUS.
 6. JOINTS AT FIFTEEN (15) FEET SPACING UNLESS OTHERWISE NOTED.
 7. SEE ODOT STD. LECS-4 AND LTU-4 (LATEST REVISIONS) FOR JOINT DETAILS.
 8. ISOLATION JOINTS SHALL BE PLACED AT ALL DRAINAGE INLETS, MANHOLES, LIGHTING STRUCTURES, ETC.
 9. SEE SHEETS 76-82 FOR SPOT ELEVATIONS.

LEGEND	
	LONGITUDINAL JOINT
	LONGITUDINAL CONSTRUCTION JOINT/TIED BUTT JOINT
	DOWELED CONTRACTION JOINT
	NON-DOWELED CONTRACTION JOINT
	ISOLATION JOINT
	REINFORCED PANEL

DESIGN	DLT	9/13	1-44 & US-62 INTERCHANGE
DRAWN	DLT	9/13	
CHECKED	JES	5/16	
APPROVED			
SQUAD	GARVER	STATE JOB NO. 27050(04)	SHEET NO. 75

JOINT LAYOUT PLAN
(SHEET 6 OF 6)